

CASE STUDY

One-Day Sinus Lift and Implant Placement at Restore Dental.



This patient came to us with a **fractured upper molar**. Upon evaluation, we found that the available bone for implant placement was **approximately 5.5 mm**, with the **maxillary sinus located just above** the area — a common anatomical limitation in such cases.



Pre-operative radiograph showing fractured maxillary molar with limited bone height below the sinus.



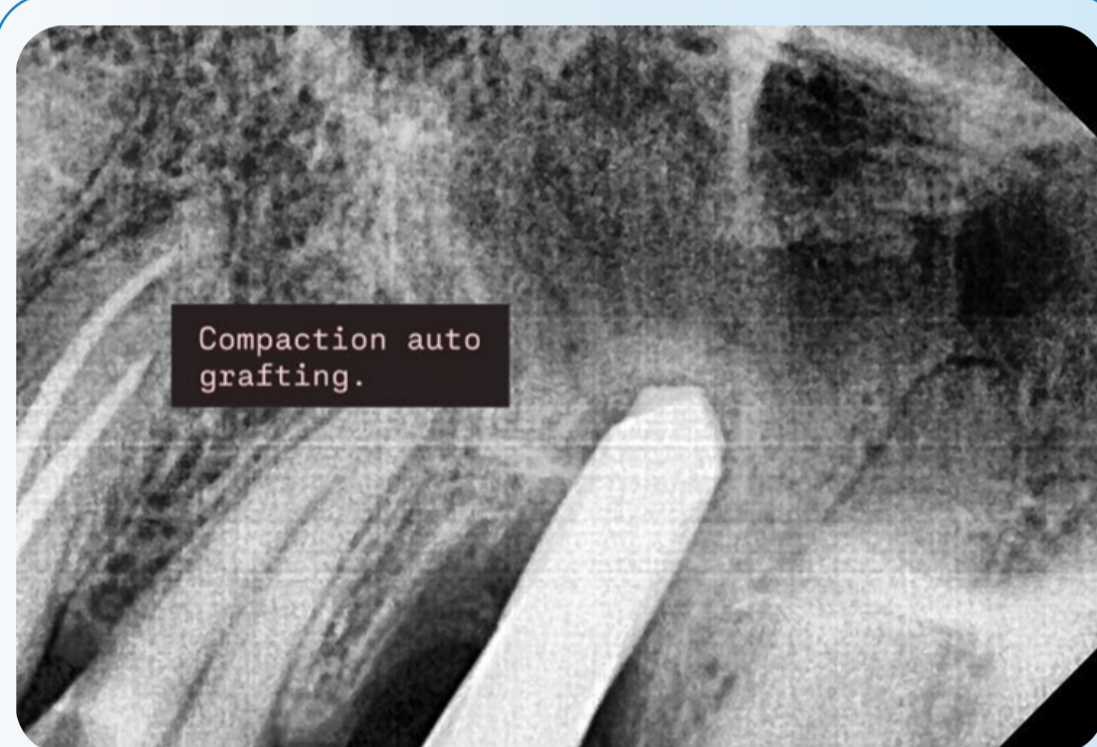
Pilot drill positioned in the interradicular bone for initial osteotomy.

To address this, we performed a **sinus lift through the extraction socket**, also known as a **minimally invasive transcrestal sinus augmentation (MITS)**. This allowed us to increase the bone height safely from the same access point.

Normally, this type of treatment is done in multiple stages across 4–6 months. But at Restore Dental, we prioritise our patients' time and comfort. Thanks to our clinical expertise and advanced equipment, we were able to complete the extraction, sinus lift, and implant placement — all in a single sitting.

We began by carefully extracting the fractured molar with minimal trauma. A **pilot drill** was used to mark and prepare the initial osteotomy site through the remaining interradicular bone.

Next, using **osseodensification burs**, we compacted the native bone and simultaneously lifted the sinus membrane, enabling safe graft placement without any perforation — a technique called **compaction autografting**.



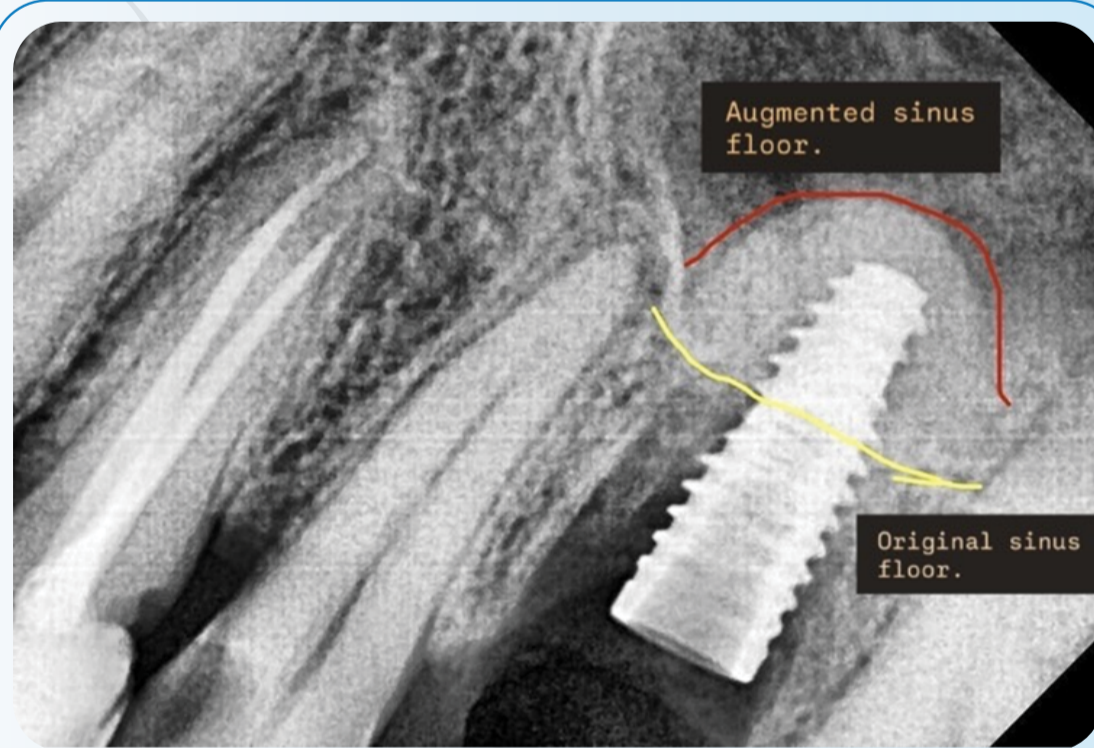
Compaction autografting performed using the osseodensification technique.



Graft containment visible within the sinus, indicating successful membrane lift without perforation.

Once the sinus membrane was lifted, **graft material was inserted and contained properly** within the elevated space. The characteristic dome or “puff” appearance confirms successful grafting with **intact sinus membrane**.

An implant measuring **4.3 x 10 mm** was placed immediately into the site. The post-operative radiograph shows excellent positioning — engaging native bone and supported by the newly grafted sinus floor.



Post-operative radiograph showing implant placement and augmented sinus floor.

We used **Versah® osseodensification** drills from Michigan, USA — a tool designed specifically for such procedures. These advanced instruments reduce trauma, improve healing, and enhance precision.

Because of this modern approach, **the entire treatment — including extraction, sinus lift, grafting, and implant placement — was completed in just one visit**. The patient experienced **minimal pain and no significant swelling**, and walked out with a fully placed implant the same day.

At **Restore Dental**, we routinely handle complex implant cases in a single sitting, helping patients avoid multiple appointments and long healing times — without compromising on safety or outcomes.

Discuss your case with **Dr. Divyesh Mehta & Dr. Ankita Wali** and get a Second Opinion.

+91-9711518504

USEFUL ARTICLES

Do I need a crown after undergoing a root canal treatment?
Invisalign vs. Braces - Which One Should You Choose?